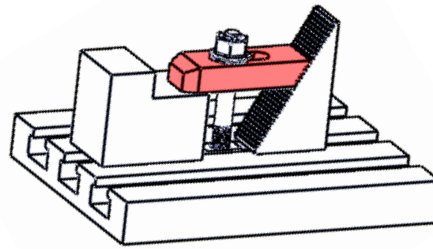
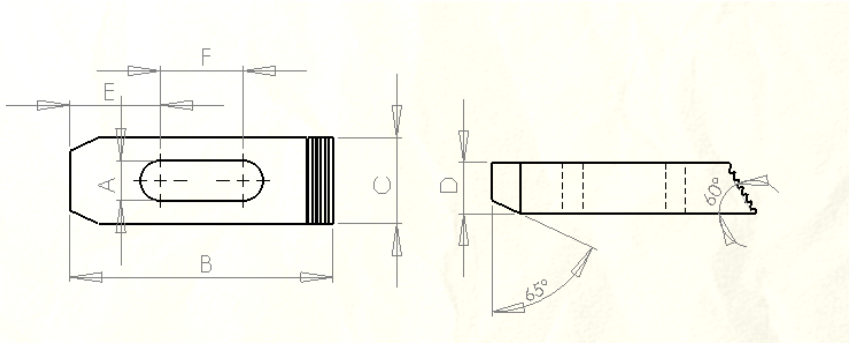


齒型壓板

STEP CLAMP



- ※ Material: S45C
- ※ Hardness of heat treatment : HRC32±5°
- ※ Surface treatment: black oxide furnished
- ※ Engage the teeth into teeth of step block to adjust the clamping height

Unit: mm .

Order no.	Model	A	B	C	D	E	F	Applied stud	
								Inch	Metric
SC-63031	3/8(S)	11	65	25.4	12.7	25.5	19	3/8	M10
SC-63032	3/8(M)	11	100	26	15	30.5	30		
SC-63033	3/8(L)	11	150	28.5	19	40.5	54		
SC-64041	1/2(S)	15	65	30	13	25	16	1/2	M12-M14
SC-64042	1/2(M)	15	100	32	19	34	31		
SC-64043	1/2(L)	15	150	32	22	47	55		
SC-65051	5/8(S)	18	65	32	16	25	14	5/8	M16
SC-65052	5/8(M)	18	100	38	19	33	30		
SC-65053	5/8(L)	18	150	38	22	44	57		
SC-66061	3/4(S)	21	100	38	19	33	30	3/4	M18-20
SC-66062	3/4(M)	21	150	38	25	48	50		
SC-66063	3/4(L)	21	200	44.5	28.5	63	70		
SC-68081	1(S)	26	150	49	32	51	39	7/8-1	M22,M24
SC-68082	1(M)	26	200	49	38	63	69		
SC-68083	1(L)	26	250	49	38	85	74		