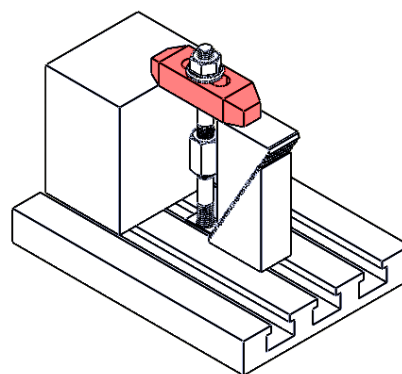
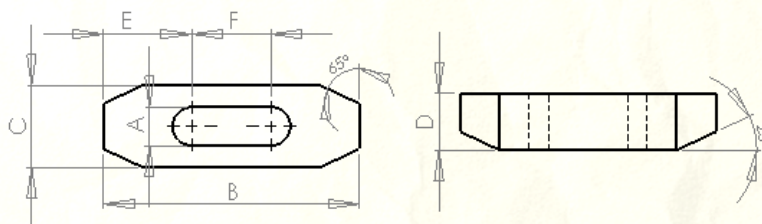


## 雙頭壓板

### PLAIN CLAMP



- ※ Material: S45C
- ※ Hardness of heat treatment : HRC 32±5°
- ※ Surface treatment: black oxide furnished
- ※ Apply in narrow space clamping.

Unit: mm

Order no.	Model	A	B	C	D	E	F	Applied stud	
								Inch	Metric
PC-63031	3/8(S)	11	65	25.4	12.7	23	19	3/8	M10
PC-63032	3/8(M)	11	100	26	15	35	30		
PC-63033	3/8(L)	11	150	28.5	19	48	54		
PC-64041	1/2(S)	15	65	30	13	25.5	16	1/2	M12-M14
PC-64042	1/2(M)	15	100	32	19	34.5	31		
PC-64043	1/2(L)	15	150	32	22	47.5	55		
PC-65051	5/8(S)	18	65	32	16	25.5	14	5/8	M16
PC-65052	5/8(M)	18	100	38	19	35	30		
PC-65053	5/8(L)	18	150	38	22	46.5	57		
PC-66061	3/4(S)	21	100	38	19	35	30	3/4	M18-20
PC-66062	3/4(M)	21	150	38	25	50	50		
PC-66063	3/4(L)	21	200	44.5	28.5	65	70		
PC-68081	1(S)	26	150	50	32	55.5	39	7/8-1	M22,M24
PC-68082	1(M)	26	200	50	38	65.5	69		
PC-68083	1(L)	26	250	50	38	88	74		
PC-68084	1(XL)	26	320	50	38	113	94		